



विद्या सर्वार्थ साधिका

ANANDALAYA
PERIODIC TEST -1
Class : VII

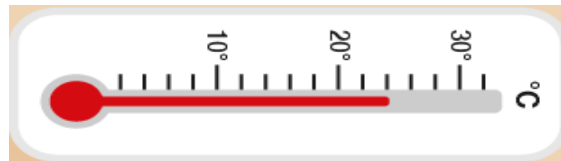
Subject: Science
Date : 17-07-2023

MM : 30
Time: 1 Hr. 30 min.

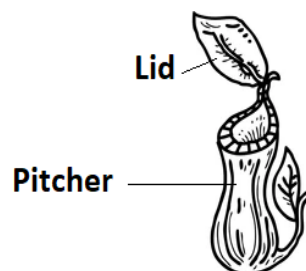
General Instructions:

- (1) There are 17 questions in this question paper. All questions are compulsory.
- (2) Question Numbers 1 to 10 are objective type questions and carry 1 mark each.
- (3) Question Numbers 11 to 13 are short answer type questions and carry 2 marks each.
- (4) Question Numbers 14 to 16 are also short answer type questions and carry 3 marks each.
- (5) Question Numbers is long answer question and carry 5 marks.

1. Which one of the following statements is NOT true for mercury as a thermometric liquid? (1)
(A) Mercury expands uniformly on heating (B) Mercury contracts uniformly on cooling
(C) Mercury sticks to the glass surface. (D) Mercury is a shiny liquid
2. When we add a lump of ice to a glass of water heat flows from _____. (1)
(A) ice to water (B) water to ice
(C) air to ice (D) ice to air
3. The reading shown in the thermometer is _____. (1)



- (A) 20°C (B) 20.2°C (C) 24 °C (D) 25°C
4. Phenolphthalein is a synthetic indicator and its colours in acidic and basic solutions respectively are _____. (1)
(A) Red and blue (B) Blue and red
(C) Pink and colourless (D) Colourless and pink
 5. When the soil is too basic, plants do not grow well in it. To improve its quality. What must be added to the soil? (1)
(A) Organic matter (B) Quicklime
(C) Slacked lime (D) Calamine solution
 6. In the pitcher plant, the part X is modified into a pitcher. Identify the part X. (1)



- (A) leaf stalk (B) leaf tip (C) root tip (D) shoot tip

For question numbers 7 and 8, two statements are given-one labelled Assertion and the other labelled Reason. Select the correct answer to these questions from the codes (A), (B), (C) and (D) as given below.

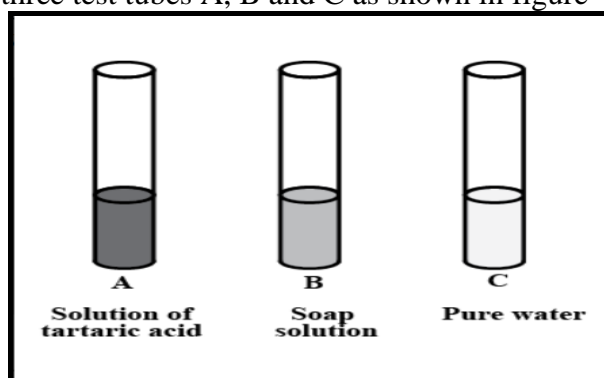
(A) Both Assertion and Reason are true and Reason is the correct explanation of Assertion

(B) Both Assertion and Reason are true but Reason is NOT the correct explanation of Assertion.

(C) Assertion is true but Reason is false

(D) Assertion is false but Reason is true.

7. Assertion: It is advised not to hold the thermometer by its bulb while reading it. (1)
Reason: The thermometer might break.
8. Assertion: When baking soda powder is applied on dry red litmus paper, it turns blue. (1)
Reason: Baking soda is basic in nature.
9. What is temperature? (1)
10. Write the name of two indicators which occur naturally. (1)
11. Write any two points of differences between clinical and laboratory thermometers. (2)
12. Lichens is one of the examples of symbiotic relationship involving fungi. Justify the given statement by stating two scientific reasons. (2)
13. Write one word for each of the following statements: (2)
(a) The symbiotic bacterium that provides nitrogen to the plants in the soluble form.
(b) The mode of nutrition seen in yeast.
(c) The plants that exhibit both autotrophic and heterotrophic mode of nutrition.
(d) The yellow tubular plant parasite that twines around the stems of other plants.
14. Give reason: (3)
(a) Laboratory thermometers are not used to measure human body temperature.
(b) Clinical thermometer is not used to measure the temperature of a substance.
(c) If the body temperature of Heena is 37.5°C , it does not mean that she has a fever.
15. (a) Explain why: (3)
(i) An antacid tablet is taken when you suffer from acidity.
(ii) Factory waste is neutralised before disposing it into the water bodies.
(b) What are the harmful effects of Acid rain? (3)
16. You are provided with three test tubes A, B and C as shown in figure with different liquids.



What will you observe when you put

- (a) a piece of blue litmus paper in test tube A.
(b) a piece of red litmus paper in test tube C.
(c) a few drops of methyl orange in test tube A.

17. Read the given passage and answer the following questions: (5)

Plants are autotrophs as they make their own food by Photosynthesis. Plants are also referred as producers. Chlorophyll pigment present in leaves plays a vital role in capturing sunlight. The captured sunlight energizes the plant's cells and triggers a series of photosynthetic chemical reactions. During photosynthesis the solar energy is converted into usable form of energy.

- (a) Represent the photosynthesis process in the form of a chemical reaction.
- (b) Name the major product formed during photosynthesis. Which form is it stored in plants?
- (c) Will the photosynthesis occur in plants on a rainy day?
- (d) Write one advantage and one disadvantage to plants if leaves are with opened stomata during day.